

efi[™]

VUTEK[®] 3360



Affordable
Upgradeable
Versatile

Grow your business with a versatile superwide printing platform.

New revenue opportunities are now within your reach.



Step up to industrial strength reliability and open new doors for business growth with the VUTEk[®] 3360 from EFI[™]. Famous for high productivity and exceptional color quality, the VUTEk 3360 is the high-speed superwide printing platform designed for growing print-for-pay businesses. The versatile superwide printer unlocks new opportunities for your business by enabling you to print solvent and dye-sublimation solvent inks at the flip of a switch or use VUTEk BioVu[®] inks — in four-, six- or eight-color modes. In addition, all of these configurations are available for the VUTEk 3360 in entry-level and full production versions, making it more affordable and simpler to build your business than ever before.



With its unique modular design, EFI's VUTEk 3360 breaks down traditional barriers to business growth by supporting a wider range of inks and flexible print applications than any other superwide printer. Switch from traditional solvent to dye-sublimation solvent printing on fabrics in minutes. Print high-quality fleet and exhibition graphics, bus wraps and precisely aligned double-sided and backlit signs and banners — plus textile applications such as flag and fabric banners — on one platform. In addition, the superwide printer can be easily and quickly upgraded right in your shop.

Save money, time and manpower.

With its ability to produce a broad range of solvent and dye-sublimation textile applications, the VUTEk 3360 is the versatile printing platform that can grow with your business – eliminating the need for multiple dedicated systems, additional manpower and increased floor space. Open new markets, while tightly managing overhead costs and creating new revenue streams. What’s more, the need for additional operator training is minimized, reducing start up time and accelerating your time to profitability.



	Included in Configuration	
	Entry Level	Full Production
Four-,Six-, Eight-Color Available	Included	Included
Second Dye-Sublimation Ink System	Included	Included
Media Input Bar	Included	Available as an option
Unwinder/Rewinder	Available as an option	Included
Fiery XF RIP	Included	Included
ColorBurst RIP	Available as an option	Available as an option
VUTEk BioVu Capable	Included	Included
*CE Hood	Included	Included
2 Sided Banner Kit	Available as an option	Included
2 Sided Backlit Kit	Available as an option	Included
High Volume Mesh Kit	Available as an option	Available as an option
Heavy Duty Unwinder	Available as an option	Available as an option
Ink Starter Kit	Included	Included
RIP Server Platform	Available as an option	Available as an option

Included in configuration
 Available as an option

* In regions where it is required, CE Hoods are included in the base configuration and an option in countries where it's not required.

Increase customer loyalty through better service.



In the print-for-pay business, exceptional color quality is expected. With EFI's VUTEk 3360, you can achieve it every time. The superwide printer prints up to 720 dpi apparent resolution for brilliant photographic color reproduction on traditional roll-to-roll and textile substrates. It also prints up to 600 square feet per hour on substrates up to 10.5 feet (3.2 meters) wide in photorealistic quality print mode, and 1,622 square feet (151 square meters) per hour in outdoor quality mode. Built with industrial-grade toughness and around-the-clock dependability, it is ideal for producing consistent quality outdoor and indoor signs, Point-Of-Purchase displays, exhibition and display graphics, posters and other superwide applications. The highly productive VUTEk 3360 allows you to produce work faster and more efficiently, leaving the door open to take on new clients and deliver more jobs for existing customers.

The EFI VUTEk Advantage

In today's fast-paced, highly-charged and competitive print-for-pay marketplace differentiating your company from the competition is critical. EFI delivers what no one else can — integrated RIP and superwide printing systems and streamlined, automated business management systems. We are the market leader in print technology with services, support and scalable products that drive your business' success beyond the printer. The result is a true competitive advantage through increased capacity and capabilities without the corresponding increase in your overhead.





Service you can count on today and tomorrow.

In the highly dynamic print-for-pay business landscape, downtime is the enemy. Your next job depends on your ability to deliver quality product — on time — today. EFI has the training, service expertise, supplies and parts you need to keep your VUTEk 3360 running at top performance and quality levels. Count on us for industry benchmark support and training because we understand that service is your business lifeline.



VUTEk Inks for Your Image

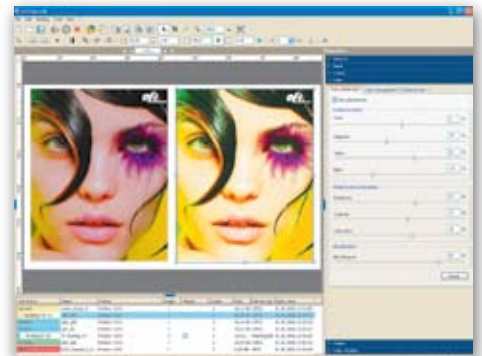
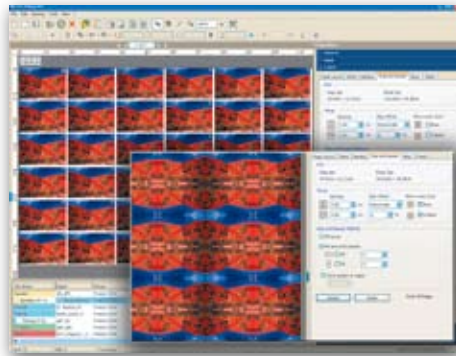
Your success depends on the inks you use. At EFI, we are dedicated to producing the highest quality inks in the world. Our VUTEk inks are engineered to produce the high-quality images your customers depend on across our entire range of printers. No other inks deliver the critical performance characteristics of purity, consistency and durability.



EFI Fiery XF Production RIP

EFI Fiery® XF is a production RIP designed to process high volumes of jobs and deliver exceptional color management on tight schedules. It leverages the full range of image quality and production capabilities of the VUTEK 3360 to produce exceptional output every time. The flexible production RIP delivers the speed, high productivity and exceptional color consistency that your customers expect. It also maximizes the return on your current IT investment by improving output and reducing production time—translating into greater profits and shorter run times.

Fiery XF harnesses EFI and Bestcolor® Technology's high-performance software to deliver speed, high productivity and exceptional color quality to VUTEK superwide printers.



EFI Print MIS Solutions

EFI's industry-standard print management information systems (EFI Print MIS) such as EFI Hagen™ and EFI Logic™ manage all your business operations — from estimating to order entry to shop floor data collection, inventory, invoicing and accounting. Unlike other solutions, these management systems are used by virtually every team member — giving them real-time information to streamline and make your processes more efficient and profitable at every stage of the business cycle.

EFI Print MIS products help you take full advantage of your VUTEK digital printers and other production equipment by providing an integrated solution that connects your shop floor management, communication and production workflow.



Specifications

VUTEk 3360

Printing Technology

- Piezo drop-on-demand inkjet technology.
- 720 dpi apparent resolution (360 dpi addressable).
- One-year printer warranty (includes piezo inkjet heads).
- Extended ink-system warranty available using VUTEk inks.
- Heads require minimal maintenance.
- 24/7 technical support.

Media/Handling

- Size: rolls with 126" (320 cm) maximum width, 125" (318 cm) maximum print width.
- Type: vinyl, pressure-sensitive, paper, mesh and textiles.
- Two-sided printing: Alignment system to enable front to back registration required for day/night backlit or banner applications.
- Optional unwind and rewind accessories available.

Print Models

- The VUTEK 3360 can be purchased in a wide range of variations:
 - Four-color
 - Six-color
 - Eight-color, switchable to Fast-4™ color

Note: All models are field upgradeable (e.g., Four-color is field upgradeable to a six-color model).

Formats

- All popular desktop file formats, including PostScript®3™, EPS, TIFF, PDF, RGB/CMYK.

Control Station

- Windows® operating system.
- VUTEk 3360 operating software.
- DVD reader.
- 1 GB Ethernet adapter.

Environmental Considerations

- Compressed Air: 80 psi (5.63 kg/cm) minimum, 150 psi (10.56 kg/cm) maximum.
- 4 cfm (0.056 m3/m) dry air only.
- Temperature: 68° F to 85° F (20° C to 29° C).
- Humidity: 20% to 80% (non-condensing).
- Weight: 3851.0 lbs. (1746.8 kg) featuring lightweight Uni-Frame construction.
- Height: 62.0" (157.5 cm).
- Width: 236.0" (599.4 cm).
- Depth: 50.0" (127.0 cm).
- Electrical: 3 phase, 40 amps (4 or 5 wire), 200-240 VAC, 50/60 Hz.

Productivity

Print output speed in square feet/square meters per hour:

Configuration	Speed	
	360 dpi	270 dpi
Entry Level	316 / 29	475/44
Entry Level Fast 4™	632 / 59	N/A
Full Production	632 / 59	N/A
Full Production	1264 / 118	N/A
Full Production Fast 4™	**1622 / 151	N/A

** Speed listed are achieved in 'High / Max' print mode

Fiery XF RIP

- Client/server architecture for decentralized remote operation.
- Unlimited clients for simultaneous set up of multiple jobs.
- Complete job management and set up both from Macintosh® and PC.
- Modern, intuitive graphical user interface with one click access to all job settings.
- Advanced, easy-to-use wizard-guided color tools for consistent predictable high color quality.
- Powerful production tools like nesting, step and repeat, scaling, cropping and tiling (flexible custom + automatic set up).

- Advanced ICC color management for reliable color quality output and proofing quality color on production level printers.
- Strong color recalibration, output quality and speed.
- Unlimited workflow and hot folder setup.
- File Output Module for output of color managed files to extend your service portfolio.
- Scalable, versatile platform grows with your needs when your business grows.
- Central RIP server that drives VUTEK superwide format printers, production printers, proofing printers and Fiery-driven xerographic devices (option). Proof your print on another printer simulating your VUTEk device and produce more sellable output on your VUTEk solution.
- Multi-lingual user interface and manuals.
- Exclusive platform for further EFI software integration.

ColorBurst RIP Alternative

- Intuitive graphical user interface for easy operation and calibration.
- Multi-language graphical user interface.
- ICC color management.
- Advanced layout feature to simplify complex printing jobs.
- Automated contour cutting support.
- Innovative screenprint emulation mode.

Inks

- VUTEk inks are supplied in 3.25 liter containers available in cyan, magenta, yellow, black, light cyan, light magenta, light yellow and light black.
- 3M offers a 5-year 3M™ MCS™ warranty with qualified 3M inks.
- 3M offers the Performance Guarantee with VUTEk inks.



EFI's integrated solutions — Production Printing, Superwide, Graphic Arts, Web to Print, Print MIS, and Corporate — increase profits, optimize business processes, and deliver greater customer satisfaction. Find out more at www.efi.com.

Get Connected with EFI

EFI's commitment to integrated solutions based on open standards means that our products work together to maximize customers' productivity and to increase their profits. From Web collaboration tools to prepress software to digital output and print management information systems, EFI's award-winning, scalable solutions give you a powerful competitive edge now and in the future.